

CRUISE SHIP PIER AND TERMINAL FACILITY SPECIFICATION OVERVIEW

クルーズ係留施設及びターミナル施設概要

As of 01/01/2021
2021年1月1日現在

■ Common Information

共通情報

| | | |
|---|---|---|
| PORT NAME: Port of Hakata (Fukuoka) 港名：博多港 | | |
| LOCATION / ADDRESS: 12-1, Okihama-machi, Hakata-ku, Fukuoka City, Fukuoka 8128620 Japan 住所：福岡県福岡市博多区沖浜町 12-1 | | |
| PORT CONTACT: Cruise Support Section, Hakata Port and Harbor Bureau 連絡先：港湾空港局港湾振興部クルーズ支援課 | | |
| Phone: 電話：+81-92-282-7177 | Fax: +81-92-282-7772 | E-mail: c-shien.PHB@city.fukuoka.lg.jp |
| Mobile phone: 携帯：－ | Website: http://port-of-hakata.city.fukuoka.lg.jp/ | Other: その他： |

I. CRUISE SHIP RECORD (OVER THE PAST FIVE YEARS)

寄港実績（過去5年）

| Ship name 船名： | Gross tonnage 総トン数： | LOA 全長： | Draft 喫水： | Maiden call (Year) 初寄港年： |
|----------------------|------------------------|------------|--------------|--------------------------------|
| SPECTRUM OF THE SEAS | 169,379 | 347.10 | 8.80 | 2019 |
| COSTA VENEZIA | 135,225 | 323.60 | 8.55 | 2019 |
| EXPLORER DREAM | 75,338 | 268.60 | 7.90 | 2019 |
| PIANO LAND | 69,840 | 260.69 | 8.30 | 2019 |
| EUROPA2 | 42,830 | 225.62 | 6.50 | 2019 |
| MSC SPLENDIDA | 137,936 | 333.33 | 8.68 | 2018 |
| NORWEGIAN JEWEL | 93,502 | 294.13 | 8.60 | 2018 |
| WESTERDAM | 82,862 | 285.24 | 8.00 | 2018 |
| SUPERSTAR AQUARIUS | 51,309 | 229.84 | 7.01 | 2018 |
| STAR LEGEND | 9,961 | 133.80 | 5.50 | 2018 |
| NORWEGIAN JOY | 167,725 | 333.46 | 8.72 | 2017 |
| MAJESTIC PRINCESS | 144,216 | 330.00 | 8.55 | 2017 |
| SUPERSTAR VIRGO | 75,338 | 268.60 | 7.90 | 2017 |
| VOLENDAM | 61,214 | 237.91 | 8.10 | 2017 |
| COSTA NEOROMANTICA | 56,769 | 220.52 | 7.60 | 2017 |
| CRYSTAL SYMPHONY | 51,044 | 238.01 | 8.00 | 2017 |
| EUROPA | 28,890 | 198.60 | 6.30 | 2017 |
| OVATION OF THE SEAS | 168,666 | 348.00 | 8.82 | 2016 |
| GOLDEN PRINCESS | 108,865 | 289.51 | 8.45 | 2016 |
| COSTA FORTUNA | 102,669 | 272.20 | 8.20 | 2016 |
| CRYSTAL SERENITY | 68,870 | 250.00 | 7.60 | 2016 |
| MSC LIRICA | 65,591 | 274.90 | 6.80 | 2016 |
| SEABOURN SOJOURN | 32,477 | 198.19 | 6.70 | 2016 |

| | | | | |
|---------------------|---------|--------|------|------|
| GLORY SEA | 24,782 | 180.45 | 7.40 | 2016 |
| QUANTUM OF THE SEAS | 168,666 | 347.08 | 8.82 | 2015 |
| COSTA SERENA | 114,261 | 289.59 | 8.30 | 2015 |
| CELEBRITY MILLENIUM | 91,011 | 294.00 | 8.30 | 2015 |
| SKYSEA GOLDEN ERA | 72,458 | 246.50 | 7.82 | 2015 |
| DIAMOND PRINCESS | 115,906 | 290.00 | 8.55 | 2014 |
| SAPPHIRE PRINCESS | 115,875 | 290.00 | 8.55 | 2014 |
| CHINESE TAISHAN | 24,427 | 180.45 | 7.25 | 2014 |
| MARINER OF THE SEAS | 138,279 | 311.12 | 8.60 | 2013 |
| COSTA ATLANTICA | 85,619 | 292.56 | 8.00 | 2013 |
| COSTA VICTORIA | 75,166 | 252.91 | 8.00 | 2012 |
| OCEAN DREAM | 35,265 | 204.76 | 7.10 | 2012 |
| ASUKA II | 50,142 | 240.90 | 7.80 | 2006 |
| PACIFIC VENUS | 26,594 | 183.40 | 6.52 | |
| NIPPONMARU | 22,472 | 166.65 | 6.56 | |

II. CONSULATE OR EMBASSY CONTACT

大使館または領事館連絡先・所在地

| Nation: 国名： | Name of consulate or embassy: 大使館または領事館名： | Phone: 電話番号： | Place: 所在地： |
|--|--|-----------------|----------------|
| Australia | Australian Consulate-General Fukuoka | +81-92-734-5055 | Fukuoka City |
| Canada | Embassy of Canada in Japan | +81-3-5412-6200 | Tokyo |
| China | Consulate-General of the People's Republic of China in Fukuoka | +81-92-713-1121 | Fukuoka City |
| Germany | German Consulate Osaka-Kobe | +81-6-6440-5070 | Osaka |
| Italy | Consulate-General of Italy in Osaka | +81-6-4706-5820 | Osaka |
| Republic of Korea | Consulate-General of the Republic of Korea in Fukuoka | +81-92-771-0463 | Fukuoka City |
| United Kingdom of Great Britain and Northern Ireland | British Embassy Tokyo | +81-3-5211-1100 | Tokyo |
| United States of America | American Consulate Fukuoka | +81-92-751-9331 | Fukuoka City |
| | | | |
| | | | |
| | | | |
| | | | |
| | | | |
| | | | |
| | | | |
| | | | |
| | | | |
| | | | |
| | | | |
| | | | |
| | | | |
| | | | |
| | | | |
| | | | |
| | | | |
| | | | |
| | | | |
| | | | |
| | | | |
| | | | |

■ Wharf (Pier) Information

埠頭別情報

| | | |
|--|---|---|
| Wharf (Pier) name: Chuo Wharf ふ頭名：中央ふ頭 | | |
| III. PHYSICAL CONSIDERATIONS 物理的留意事項 | | |
| 1. Berth 岸壁 | Length / Water depth 延長/水深 | ① #5 270m / -10m ② #6 330m / -10.5m |
| | Height of the pier above MLW or chart datum (平均干潮位又は海図基準 からの) 岸壁の高さ | ① #5 3.33m ② #6 3.5m |
| | Pier depth (distance to the closest obstruction behind the pier edge) 岸壁の幅 (岸壁の端から背 後障害物までの距離) | ① #5 20m ② #6 20m |
| | Minimum depth across the berth 岸壁の最低水深 | ① #5 -10m ② #6 -10.5m |
| | Fender bar 防舷材 Absorbed energy / number of the fender bars 吸収エネルギー/本数 | ① #5 475 kN・m / 8, 309 kN・m / 4 179 kN・m / 3 ② #6 710 kN・m / 32 |
| | Bollard 係船柱 Specification / number of the bollards スペック/本数 | ① #5 150t / 4, 100t / 2, 70t / 7 ② #6 150t / 17, 200t / 2 |
| 2. Channel 航路 | Width / water depth 幅/水深 | 300m / -12m |
| 3. Turning basin (diameter) 回頭泊地 (直径) | Shall discuss with the port authority | |
| 4. Clearance 高さ制限 | No limit | |
| 5. Maximum tidal range / max currents 最大潮差/最大潮流 | <Tidal range> HHW: 2.84m / LLW: -0.5m <Currents> SW0.1kt (6.9cm/s) at high tide NE0.2kt (8.7cm/s) at low tide | |
| 6. Wind & weather conditions / tides by season 風及び季節による天候/潮汐の変化 | Less than 5m/s (90%) and more than 10m/s (5.4%) | |

| IV. LANDSIDE FACILITIES | | |
|---|---|---|
| 陸上施設 | | |
| 1. Terminal ターミナル等 | Terminal Availability ターミナルの有無 | Chuo Wharf Cruise Center (Open in May, 2015) |
| | Shelter or facilities to shelter from rain (無い場合) 雨よけ施設の有無 | Available |
| | Boarding Bridge ボーディングブリッジ | Not available |
| 2. Shore gangway ギャングウェイ | | Not available |
| 3. Pay phone 公衆電話 | | Not available *Available at Hakata Port International Terminal |
| 4. Restroom / washroom トイレ | | Available |
| 5. Vending machine / kiosk 自動販売機・売店 | | Vending machine: Available Kiosk: Available *Available at Harbor City |
| 6. Need to arrange shuttles to downtown? 市街地へシャトルバスが必要か | | No |
| 7. Distance and time to downtown? 市街地までの距離・時間 | | 3km / 15min |
| 8. Distance and time to primary sightseeing area 主要観光地までの距離・時間 | | Dazaifu Tenmangu Shrine: 20km / 30min |
| V. CUSTOMS AND IMMIGRATION | | |
| 税関及び入国管理 | | |
| 1. Availability of CIQ services and facilities CIQの有無 | Permanent 常設 | Yes |
| | Temporary 仮設 (船上を含む) | Yes |
| 2. Secure electronic access 自動化出入国ゲートの有無 | | Not available |
| VI. WORKING HOURS | | |
| サービス提供時間 | | |
| 1. Pilotage パイロット | | 24hrs |
| 2. Tuggage タグ | | 24hrs |
| 3. Line handling 綱とり | | 24hrs |
| 4. Other (pls specify) その他 | | |
| VII. SECURITY | | |
| セキュリティ | | |
| 1. ISPS certified? ISPSの認定有無 | | Yes |

| VIII. TRANSPORTATION 交通機関 | | |
|---|----------------------------------|---|
| 1. Parking for tour buses (number of buses) 観光バス待機所 (駐車台数) | | 140 |
| 2. Parking for private cars (number of cars) 自家用車駐車場 (駐車台数) | | 135 |
| 3. Parking for taxis (number of taxis) タクシープール (駐車台数) | | 7 |
| 4. Name of the nearest airport from the pier ふ頭から最も近い空港の名称 | | Fukuoka International Airport |
| 5. Time from the pier to the airport by car ふ頭から空港までの車での移動時間 | | 25-min |
| 6. Name of the nearest rail station from the pier ふ頭から最も近い鉄道駅の名称 | | JR Hakata Station |
| 7. Time from the pier to the rail station by car ふ頭から鉄道駅までの車での移動時間 | | 15 min |
| IX. TERMINAL SERVICE ターミナル内のサービス | | |
| 1. Wi-Fi service Wi-Fi サービス | | Available |
| 2. Postal & delivery service 郵便・宅配便サービス | | Not available *Available at Hakata Port International Terminal |
| 3. Foreign exchange 外貨両替所 | Availability 両替所の有無 | Available Exchange machine |
| | Kinds of currencies 取り扱い貨幣の種類 | US dollar, South Korean won, Chinese yuan and Japanese yen. (Other currencies are also available) |
| | Business hours・days 営業時間・営業日 | 24hrs |
| 4. Tourist information 観光案内所 | Availability 観光案内所の有無 | Available |
| | Language 対応言語 | English, Chinese and Japanese Depends on cruise ships |
| | Business hours・days 営業時間・営業日 | Depends on cruise ships |

X. REFERENCE INFORMATION

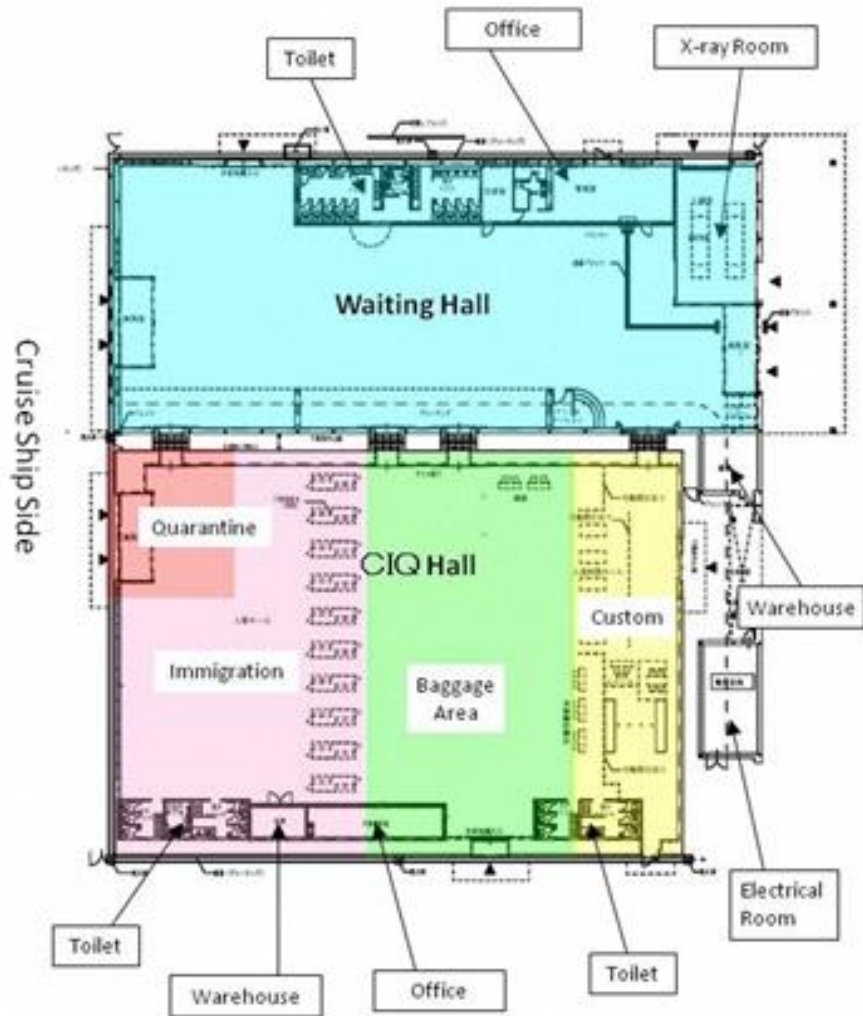
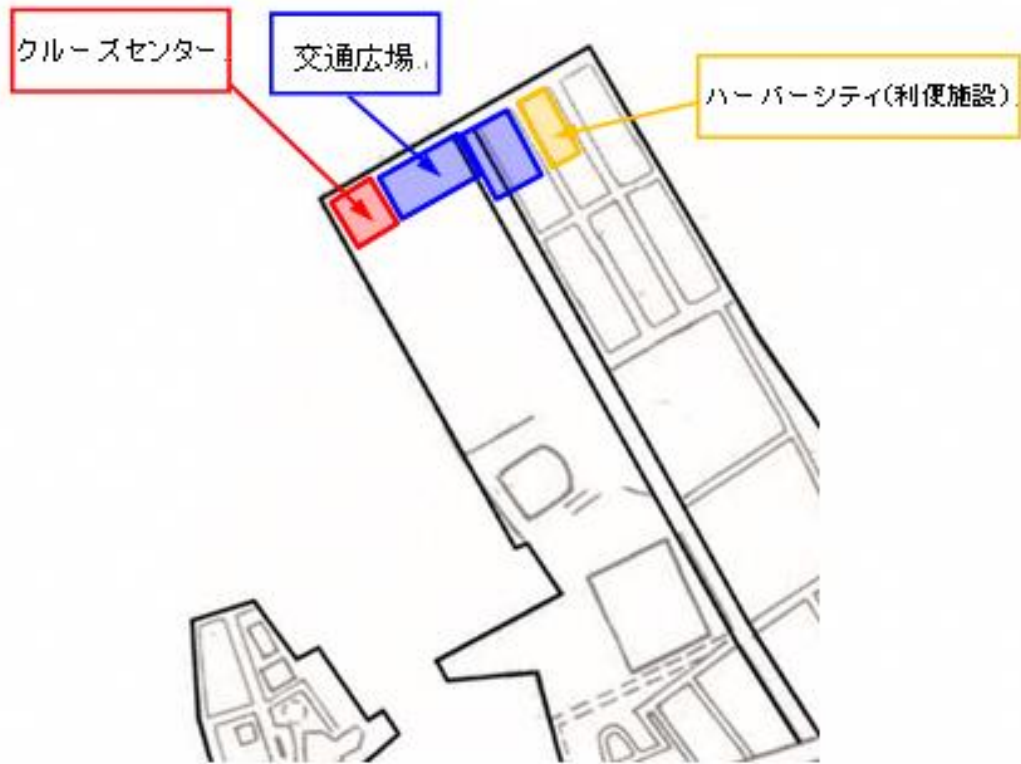
参考情報

Wharf position figure

ふ頭位置図

<http://port-of-hakata.city.fukuoka.lg.jp/english/portmap/index.html>

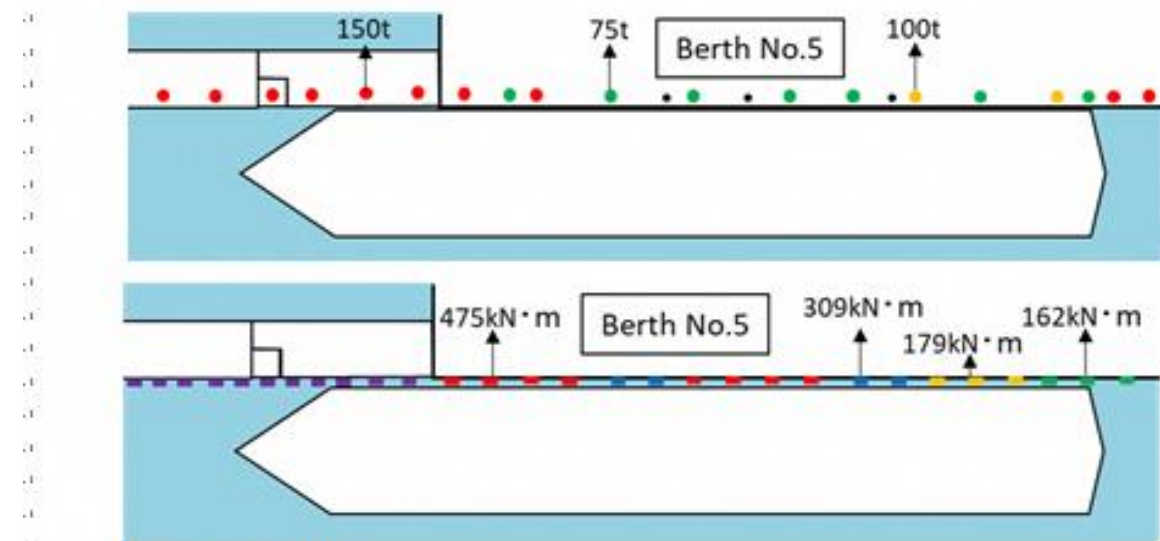
Figure of the terminal placement and passenger line of flow
ターミナル配置図と受入動線



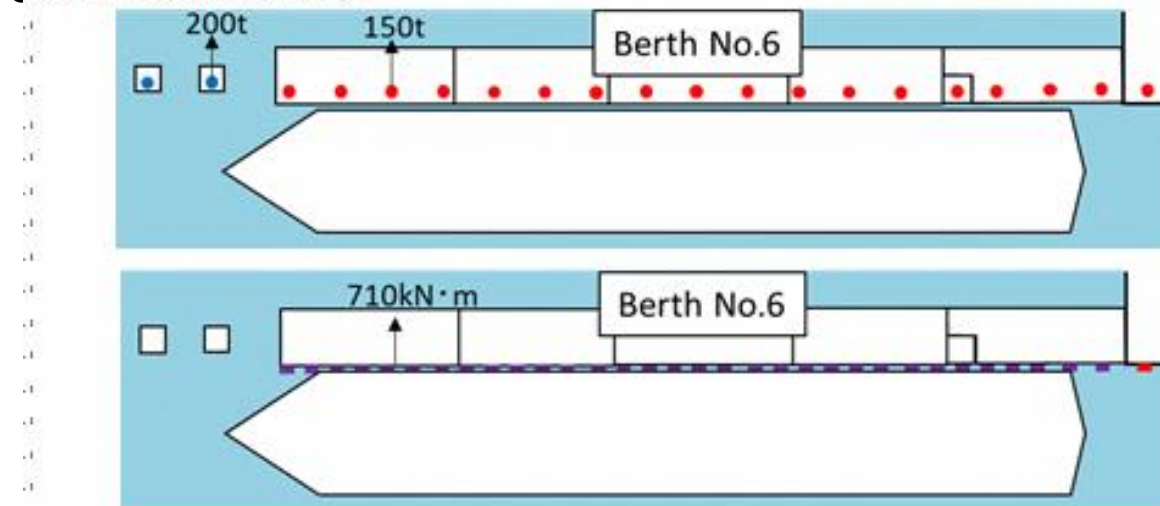
The details of a fender bar and bollard

防舷材と係船柱の詳細

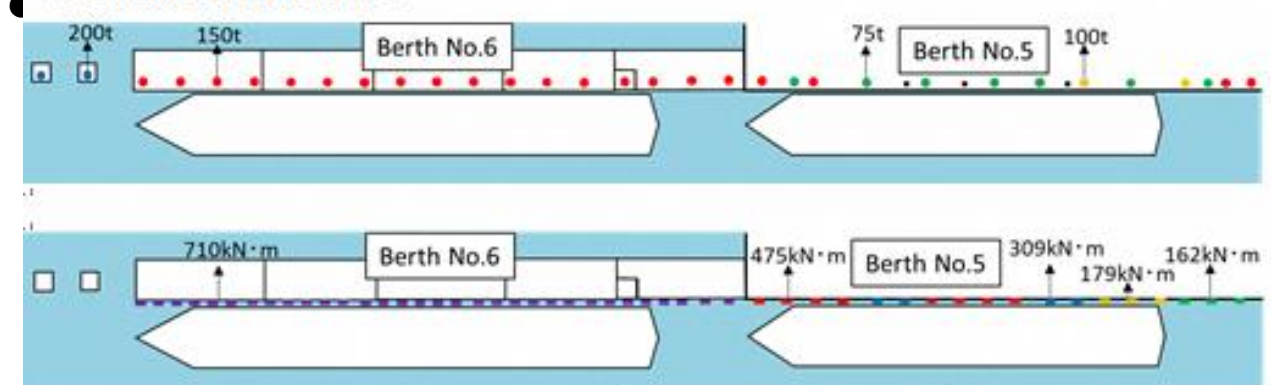
● Berth No.5 at Chuo Wharf



● Berth No.6 at Chuo Wharf.



● Berth No.5-6 at Chuo Wharf.



| | | |
|--|---|---|
| Wharf (Pier) name: Hakozaiki Wharf ふ頭名：箱崎ふ頭 | | |
| III. PHYSICAL CONSIDERATIONS 物理的留意事項 | | |
| 1. Berth 岸壁 | Length / Water depth 延長/水深 | ① #4-5 425m / -10m, -12m |
| | Height of the pier above MLW or chart datum (平均干潮位又は海図基準 からの) 岸壁の高さ | ① #4-5 3.08m |
| | Pier depth (distance to the closest obstruction behind the pier edge) 岸壁の幅 (岸壁の端から背 後障害物までの距離) | ① #4-5 20m |
| | Minimum depth across the berth 岸壁の最低水深 | ① #4-5 -10m |
| | Fender bar 防舷材 Absorbed energy / number of the fender bars 吸収エネルギー/本数 | ① #4-5 630 kN・m / 1 , 476 kN・m / 4 , 384 kN・m / 2 315 kN・m / 9 |
| | Bollard 係船柱 Specification / number of the bollards スペック/本数 | ① #4-5 150t / 6 , 100t / 2 , 70 t / 9 |
| 2. Channel 航路 | Width / water depth 幅/水深 | 300m / -12m |
| 3. Turning basin (diameter) 回頭泊地 (直径) | Shall discuss with the port authority | |
| 4. Clearance 高さ制限 | No limit | |
| 5. Maximum tidal range / max currents 最大潮差/最大潮流 | <Tidal range> HHW: 2.84m / LLW: -0.5m <Currents> SW0.1kt (6.9cm/s) at high tide NE0.2kt (8.7cm/s) at low tide | |
| 6. Wind & weather conditions / tides by season 風及び季節による天候/潮汐の変化 | Less than 5m/s (90%) and more than 10m/s (5.4%) | |

| IV. LANDSIDE FACILITIES 陸上施設 | | |
|---|---|---------------------------------------|
| 1. Terminal ターミナル等 | Terminal Availability ターミナルの有無 | Not available |
| | Shelter or facilities to shelter from rain (無い場合) 雨よけ施設の有無 | Not available |
| | Boarding Bridge ボーディングブリッジ | Not available |
| 2. Shore gangway ギャングウェイ | | Not available |
| 3. Pay phone 公衆電話 | | Not available |
| 4. Restroom / washroom トイレ | | Available |
| 5. Vending machine / kiosk 自動販売機・売店 | | Not available |
| 6. Need to arrange shuttles to downtown? 市街地へシャトルバスが必要か | | Yes |
| 7. Distance and time to downtown? 市街地までの距離・時間 | | 6km / 20min |
| 8. Distance and time to primary sightseeing area 主要観光地までの距離・時間 | | Dazaifu Tenmangu Shrine: 20km / 30min |
| V. CUSTOMS AND IMMIGRATION 税関及び入国管理 | | |
| 1. Availability of CIQ services and facilities CIQの有無 | Permanent 常設 | Yes (Customs only) |
| | Temporary 仮設 (船上を含む) | Yes |
| 2. Secure electronic access 自動化出入国ゲートの有無 | | Not available |
| VI. WORKING HOURS サービス提供時間 | | |
| 1. Pilotage パイロット | | 24hrs |
| 2. Tugage タグ | | 24hrs |
| 3. Line handling 綱とり | | 24hrs |
| 4. Other (pls specify) その他 | | |
| VII. SECURITY セキュリティ | | |
| 1. ISPS certified? ISPSの認定有無 | | Yes |

| VIII. TRANSPORTATION 交通機関 | | |
|---|----------------------------------|-------------------------------|
| 1. Parking for tour buses (number of buses) 観光バス待機所 (駐車台数) | | 45 |
| 2. Parking for private cars (number of cars) 自家用車駐車場 (駐車台数) | | 0 |
| 3. Parking for taxis (number of taxis) タクシープール (駐車台数) | | 30 |
| 4. Name of the nearest airport from the pier ふ頭から最も近い空港の名称 | | Fukuoka International Airport |
| 5. Time from the pier to the airport by car ふ頭から空港までの車での移動時間 | | 20 min |
| 6. Name of the nearest rail station from the pier ふ頭から最も近い鉄道駅の名称 | | JR Hakata Station |
| 7. Time from the pier to the rail station by car ふ頭から鉄道駅までの車での移動時間 | | 15 min |
| IX. TERMINAL SERVICE ターミナル内のサービス | | |
| 1. Wi-Fi service Wi-Fi サービス | | |
| 2. Postal & delivery service 郵便・宅配便サービス | | |
| 3. Foreign exchange 外貨両替所 | Availability 両替所の有無 | |
| | Kinds of currencies 取り扱い貨幣の種類 | |
| | Business hours・days 営業時間・営業日 | |
| 4. Tourist information 観光案内所 | Availability 観光案内所の有無 | |
| | Language 対応言語 | |
| | Business hours・days 営業時間・営業日 | |

X. REFERENCE INFORMATION

参考情報

Wharf position figure

ふ頭位置図

<http://port-of-hakata.city.fukuoka.lg.jp/english/portmap/index.html>

Figure of the terminal placement and passenger line of flow

ターミナル配置図と受入動線

The details of a fender bar and bollard

防舷材と係船柱の詳細

● Berth No. 4-5 at Hakozaki Wharf

