

■ Wharf (Pier) Information

埠頭別情報

Wharf (Pier) name: Motobu district ふ頭名：本部地区		
III. PHYSICAL CONSIDERATIONS 物理的留意事項		
1. Berth 岸壁	Length / Water depth 延長/水深	① 220 / -9.0m ② 240 / -7.5m
	Height of the pier above MLW or chart datum (平均干潮位又は海図基準 からの) 岸壁の高さ	① 3.3m ② 3.3m
	Pier depth (distance to the closest obstruction behind the pier edge) 岸壁の幅 (岸壁の端から背 後障害物までの距離)	① 32.5m ② 32.5m
	Minimum depth across the berth 岸壁の最低水深	① -9.0m ② -7.5m
	Fender bar 防舷材 Absorbed energy / number of the fender bars 吸収エネルギー/本数	① 9.0tf・m / 15 ② 10.4tf・m / 16
	Bollard 係船柱 Specification / number of the bollards スペック/本数	① 100t / 11 ② 100t / 12
2. Channel 航路	Width / water depth 幅/水深	300m / -9.0m over
3. Turning basin (diameter) 回頭泊地 (直径)		560m
4. Clearance 高さ制限		No limit
5. Maximum tidal range / max currents 最大潮差/最大潮流		<Tidal range> HHW 3.2m / LLW -0.5m
6. Wind & weather conditions / tides by season 風及び季節による天候/潮汐の変化		—

IV. LANDSIDE FACILITIES		
陸上施設		
1. Terminal ターミナル等	Terminal Availability ターミナルの有無	Not Available
	Shelter or facilities to shelter from rain (無い場合) 雨よけ施 設の有無	Not Available
	Boarding Bridge ボーディングブリッジ	Not Available
2. Shore gangway ギャングウェイ		Not Available
3. Pay phone 公衆電話		Not Available
4. Restroom / washroom トイレ		Not Available
5. Vending machine / kiosk 自動販売機・売店		Not Available
6. Need to arrange shuttles to downtown? 市街地へシャトルバスが必要か		Yes
7. Distance and time to downtown? 市街地までの距離・時間		Motobu Town 3km/10min (by car) Nago City 13km/30min (by car)
8. Distance and time to primary sightseeing area 主要観光地までの距離・時間		Okinawa Churaumi Aquarium 6km/15min (by car)
V. CUSTOMS AND IMMIGRATION		
税関及び入国管理		
1. Availability of CIQ services and facilities CIQの有無	Permanent 常設	No
	Temporary 仮設 (船上を含む)	Yes
2. Secure electronic access 自動化出入国ゲートの有無		No
VI. WORKING HOURS		
サービス提供時間		
1. Pilotage パイロット		No
2. Tugage タグ		No
3. Line handling 綱とり		No
4. Other (pls specify) その他		
VII. SECURITY		
セキュリティ		
1. ISPS certified? ISPSの認定有無		No

VIII. TRANSPORTATION 交通機関		
1. Parking for tour buses (number of buses) 観光バス待機所 (駐車台数)		10~20
2. Parking for private cars (number of cars) 自家用車駐車場 (駐車台数)		50~60
3. Parking for taxis (number of taxis) タクシープール (駐車台数)		20~30
4. Name of the nearest airport from the pier ふ頭から最も近い空港の名称		Naha airport
5. Time from the pier to the airport by car ふ頭から空港までの車での移動時間		2 hrs
6. Name of the nearest rail station from the pier ふ頭から最も近い鉄道駅の名称		—
7. Time from the pier to the rail station by car ふ頭から鉄道駅までの車での移動時間		—
IX. TERMINAL SERVICE ターミナル内のサービス		
1. Wi-Fi service Wi-Fi サービス		Not Available
2. Postal & delivery service 郵便・宅配便サービス		Not Available
3. Foreign exchange 外貨両替所	Availability 両替所の有無	Not Available
	Kinds of currencies 取り扱い貨幣の種類	
	Business hours・days 営業時間・営業日	
4. Tourist information 観光案内所	Availability 観光案内所の有無	Not Available
	Language 対応言語	
	Business hours・days 営業時間・営業日	

X. REFERENCE INFORMATION

参考情報

Wharf position figure

ふ頭位置図



Source : Google Earth

Figure of the terminal placement and passenger line of flow

ターミナル配置図と受入動線

The details of a fender bar and bollard

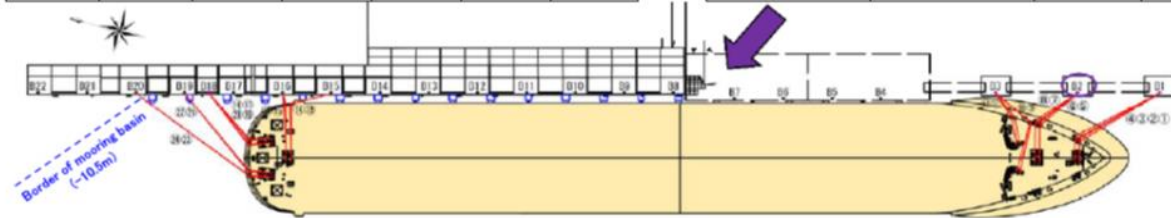
防舷材と係船柱の詳細

< Mooring arrangement plan (220,000 GRT (Loa 362m, Bmld 47m) class cruise ship portside alongside head out) >

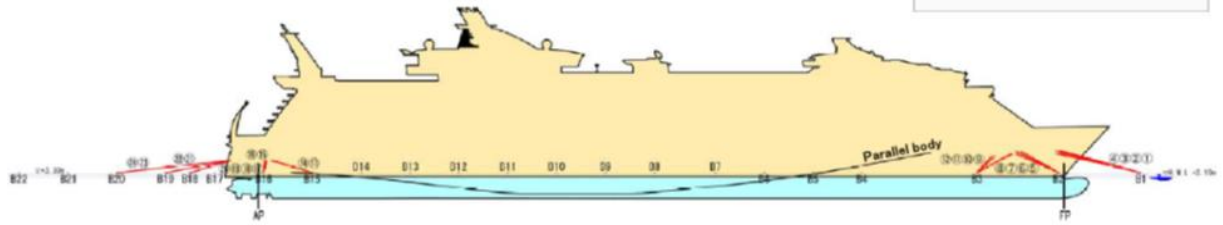
Arrangement of mooring lines

Total mooring lines	Bow side			Stern side		
	Head lines (1:2:3:4)	Breast lines (5:6:7:8)	Spring lines (9:10:11:12)	Spring lines (13:14:15:16)	Breast lines (17:18:19:20)	Stern lines (21:22:23:24)
24	4	4	4	2	8	2

Allowable average wind speed during mooring (m/s)	Incident angle (Apparent wind direction) (knot)	Bit to reach allowable tractive force
12.08	130	B2



When moored at 15.50m south side from center of wharf (-10.5m depth, 420m length)

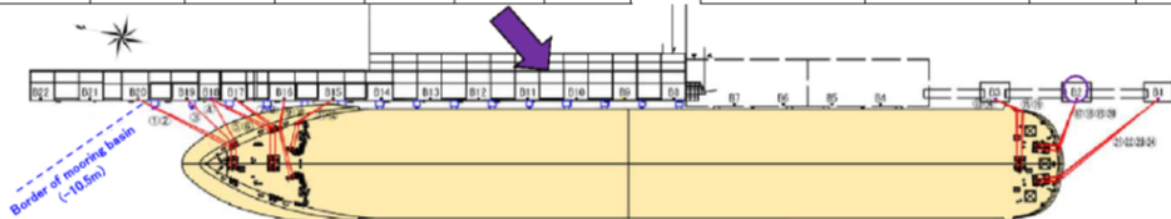


< Mooring arrangement plan (220,000 GRT (Loa 362m, Bmld 47m) class cruise ship starboard side alongside head in) >

Arrangement of mooring lines

Total mooring lines	Bow side			Stern side		
	Head lines (1:2:3:4)	Breast lines (5:6:7:8)	Spring lines (9:10:11:12)	Spring lines (13:14:15:16)	Breast lines (17:18:19:20)	Stern lines (21:22:23:24)
24	2	8	2	4	4	4

Allowable average wind speed during mooring (m/s)	Incident angle (Apparent wind direction) (knot)	Bit to reach allowable tractive force
13.59	130	B2



When moored at 16.0m north side from center of wharf (-10.5m depth, 420m length)

